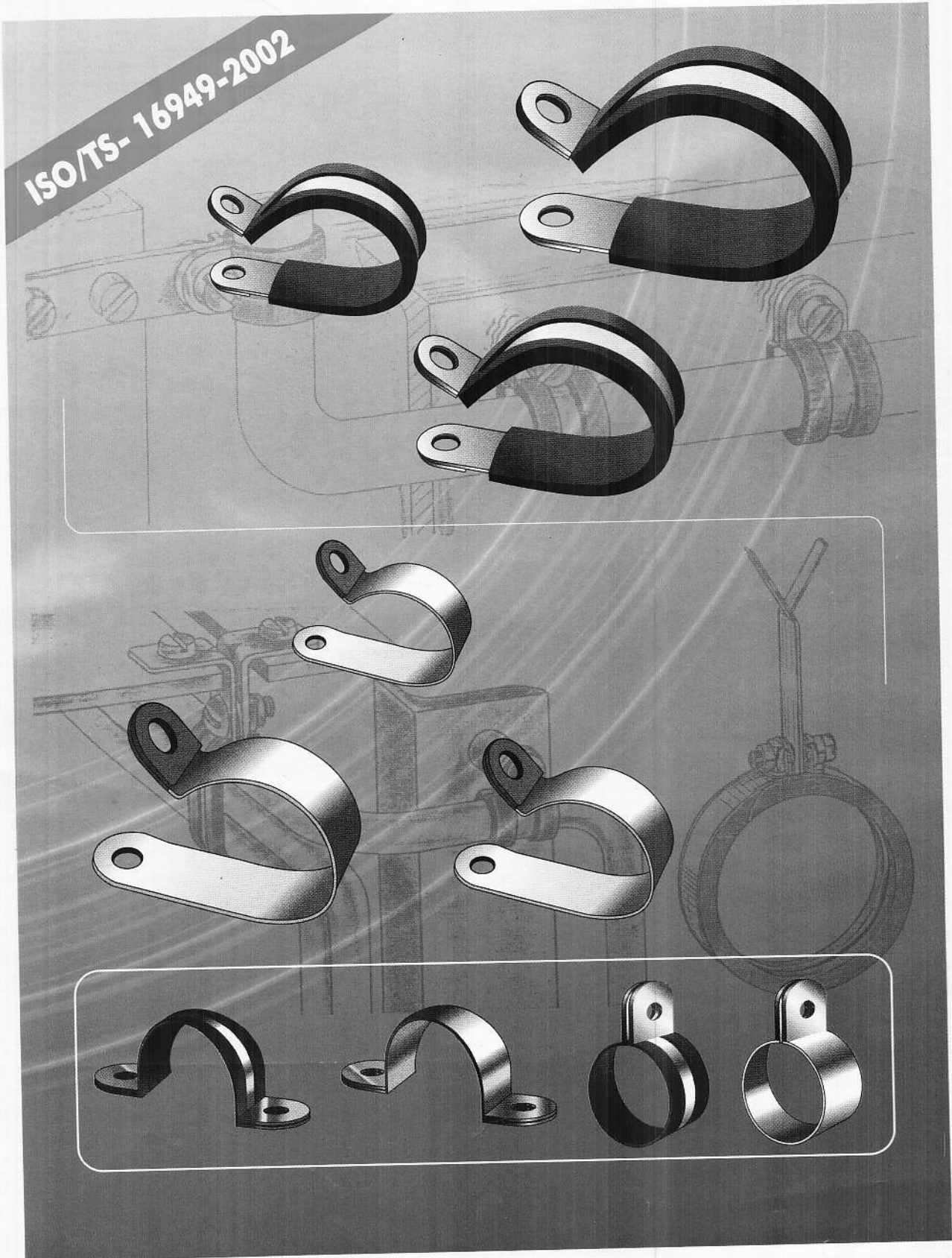
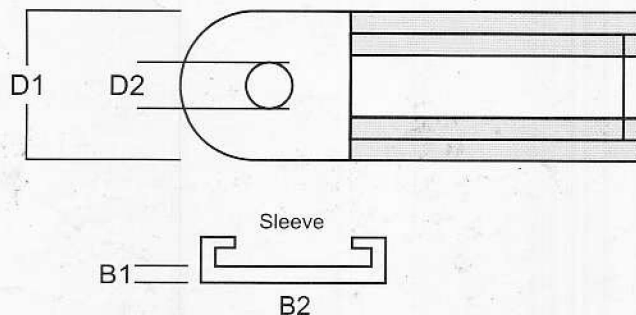
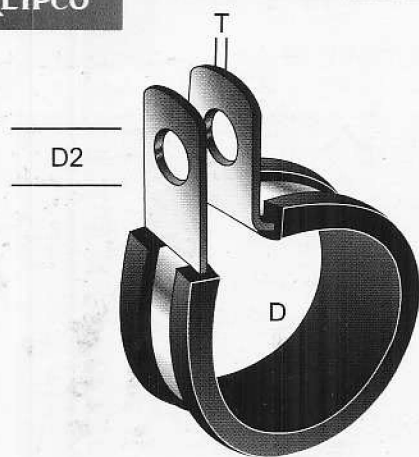


ISO/TS-16949-2002



**'P' Clamps
For Holding Pipes & Cables**

'P' Clamps For Holding Pipes & Cables



Technical Data. All Dimensions are in mm

Band Width D1	Diameter D	Hole D2	Suitable For Bolt	Band Thickness T	Sleeve	
					Thickness B1	Width B2
9	5 to 20	4.2	M4	0.8	1.0	11.06
12	10 to 30	5.2	M5	0.9	1.2	14.4
15	15 to 50	6.4	M6	0.9	1.2	17.4
20	20 to 60	8.4	M8	1.0	3	26
25	20 to 60	10.4	M10	1.0	3	28

NOTE :

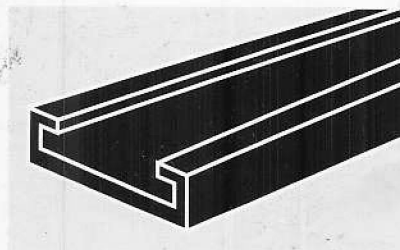
These dimensions are for reference purpose only. While sending Enquiry, give drawing AND/OR sample with details of Type, Hose pipe dia and other particulars.

APPLICATIONS :

Automotive, Electrical Equipment, cables, pipelines, computers, domestic Appliances, Interiour, exterior, installations etc. etc.

INSTALLATION/FITMENT :

A 25 lb minimum tension is recommended for Tubes where no movement is required. and 10 lb maximum tension where movement is desired. The position of the Clamp relative to the tube must be at 90°. Proper selection of Clamp for the job is vital for a dependable installation. A loose Clamp will permit abrasion and often cause clamp breakage or even Tube and/or fitting problem.



RUBBER INSULATION

Material Properties	EPDM
Elongation at break %	350
Tensile strength N/mm ²	7
Shore hardness A	55 ± 5
Temperature - °C -	-40o to 120°
Ageing and light crack resistance	very good
Wear resistance: Weather and Ozone	very good
Resistance against	
Oil and Grease	unstable
Petrol	unstable
Acids	good
Alkalis	good
Alconols	good

<p>METAL BANDS :</p> <p>CR Mild Steel Bands to IS:513</p> <p>duly Zinc plated, Yellow Passivated to IS:1573</p>

ISO/TS 16949:2002



A CERTIFIED CO.